

PFT-PRO

Smart, fast, and accurate

Advanced Camera-Based Headlight Aligner



PFT-PRO is the ideal tool for checking next-generation headlights.

Its **precise mechanics** and **advanced analysis** algorithms make it **compliant with the strictest requirements** of major vehicle manufacturers.

Suitable for all types of headlights, it can automatically detect the cut-off line for correct adjustment.

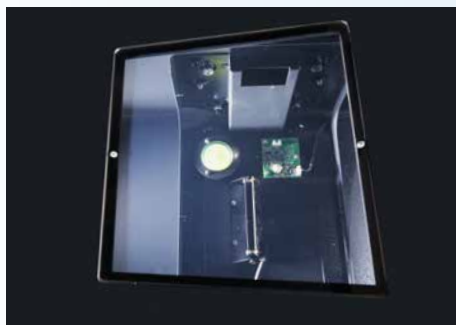


TECNOMOTOR®



made in italy

PFT-PRO is a **next-generation headlight aligner** equipped with a CMOS camera **able to analyze and process headlights of cars, motorcycles, and trucks.**



- High measurement accuracy thanks to the automatic **compensation system of the measurement area ($\pm 0.7\%$)** in both directions.

- Smooth camera movement due to **perfect weight balance.**

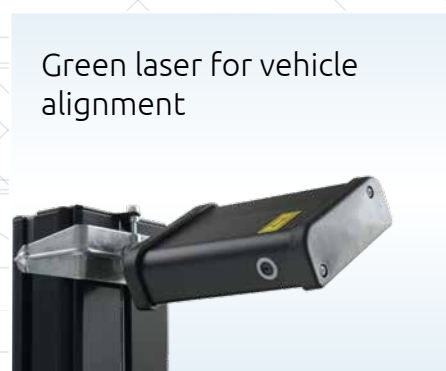
- **Green laser** ensures proper alignment with the vehicle, **combined with cross laser** for accurate projector center definition.

Suitable for headlights
HALOGEN – XENON – LED – LASER

Suitable for systems
DLA – MATRIX – ILS



Rotating display for easier projector adjustment



Green laser for vehicle alignment



Adjustable rolling base system



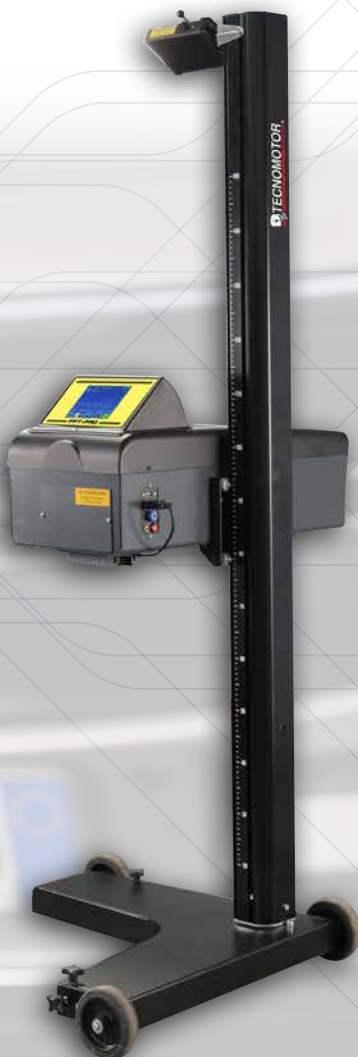
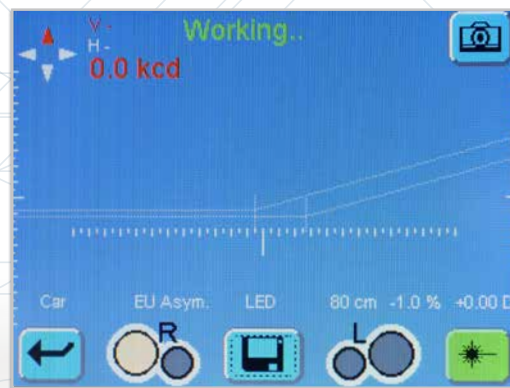
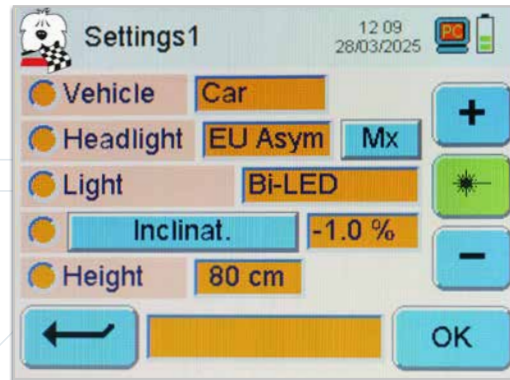
Cross laser for projector alignment



SOFTWARE

PFT-PRO

Advanced Camera-Based
Headlight Aligner





Optional accessories

- 24-column printer
- Binary kit
- Calibration system

Technical specifications

Measurement height	240 ÷ 1450 mm
Vertical deviation	± 6%
Horizontal deviation	± 10%
Measurement distance	100 ÷ 500 mm
Measurement intensity BRIGHT	0 ÷ 150 Klux (lux/1m) 0 ÷ 240 lux (lux/25m) Accuracy ± 3% f.s.
Horizontal deviation accuracy	± 0,2%
Vertical deviation accurac	± 0,1%

PFT-PRO

Advanced Camera-Based
Headlight Aligner



WWW.TECNOMOTOR.IT
NEXION SPA - ITALY